

Lodge Bog Management Plan 2011-2016

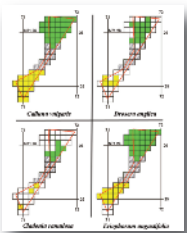
Tadhg Ó Corcora
Irish Peatland Conservation Council



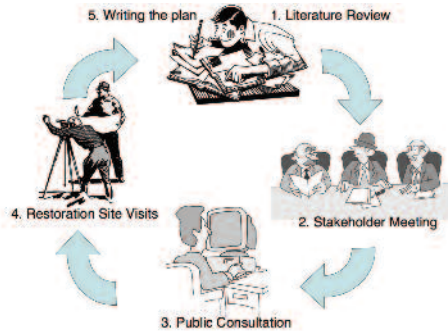
Lodge Bog, Co. Kildare, Ireland is a 35ha intact remnant of raised bog habitat. The site has been managed for conservation by the Irish Peatland Conservation Council (IPCC) since 2005. The Lodge Bog Management Plan 2011-2016 tackles the issues threatening Lodge Bog (see map inset).



Following the acquisition of Lodge Bog from Bord na Móna in 2005 and a private purchase in 2008, IPCC put in place a conservation management plan with the key aim of restoring the raised bog ecosystem functionality while continuing its use as an educational resource. Flora, fauna and vegetation surveys were carried out, peat cores were taken and a comprehensive dataset on the site has been built. To restore hydrological functioning drains were blocked and water tables have been monitored since 2005. Restoration of *Sphagnum* moss vegetation to bare peat areas following the Canadian methods is also being undertaken. To ensure minimal site degradation while allowing for the site to be used as part of IPCC's education programmes, a floating boardwalk was constructed. The Lodge Bog Management Plan 2011-2016 collated all research data on the site and formulates the best practice management actions required for the long term conservation of the site.

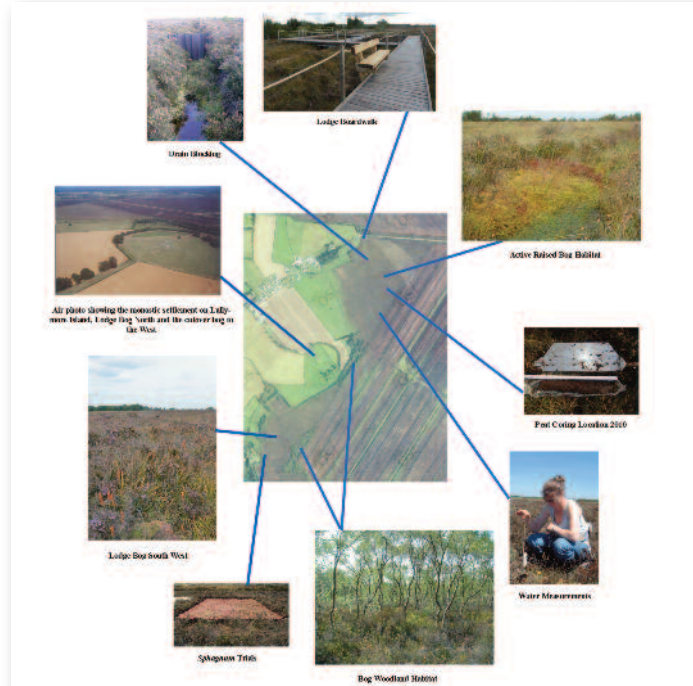
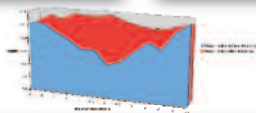
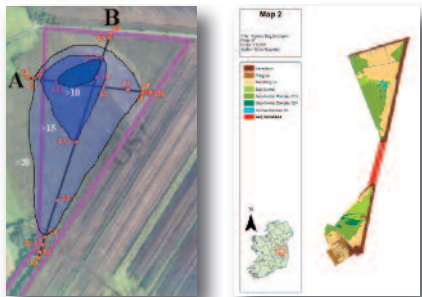


Plan Process



Importance of Lodge Bog

This research revealed a recorded diversity of 200 floral species and 188 faunal species. Of particular note are the *Sphagnum*, *Drosera* and *Cladonia* species as well as resident curlew, *Numenius arquata*, and the common frog, *Rana Temporaria*. Vegetation surveys indicate 40% of Lodge is active raised bog habitat (7110) as defined under the EU Habitats Directive while the water table was found to be within 30cm of the surface across 70% of the site, approaching the necessary conditions for *Sphagnum* growth.



The overall aim of the Lodge Bog Management Plan 2011-2016 is "To enhance and maintain Lodge Bog so that it is a fully functioning, self regulating active raised bog ecosystem." Combining all the data gathered the plan sets out 20 objectives (listed below) to achieve this aim. Within these there are 53 individual actions formulated to achieve same.

- 1: Control Fire; 2: Control Internal Hydrology; 3: Control External Hydrology; 4: Control Dumping; 5: Control Scrub; 6: Control Invasive Species; 7: Control Predators; 8: Control Trampling; 9: Assess Conservation Status; 10: Assess Connectivity; 11: Assess Plan Effectiveness; 12: Manage Education & Interpretation; 13: Co-Ordinate Research; 14: Ensure Site Consolidation; 15: Manage Security, Health & Safety; 16: Manage Signage & Parking; 17: Deter Shooting; 18: Deter Grazing; 19: Ensure Resources; 20: Fundraise Successfully

